

How to Attach Beads to Wonder Loom Projects

We have been asked several times how to attach beads to Wonder Loom projects, so we put together a quick guide to help you get started. More detailed instructions and examples will be coming with the Wonder Loom bead boxes and Speed Bader Kits.



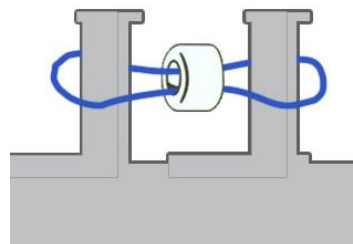
Slide Through:

The easiest method of attaching beads to your project is to simply slide the bead over the completed bracelet. This works best with single bracelets, but other designs may work with large hole beads.



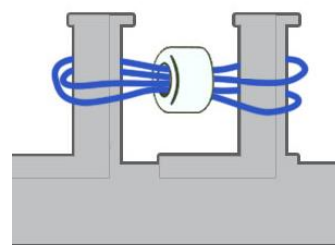
Single Loop:

A way to incorporate the bead inside the design is the single loop. Simply put the band through the bead before looping it on the Wonder Loom.



Double Loop:

Some designs require the beads to be flush with the design, so you can double the band over before putting it through the bead. This technique may require two hooks, but is useful for tighter projects.



Pendant/Charm Loop:

Simply pass the band through the bead and wrap it back around the top of the bead to make a pendant/charm that can be hung from a necklace or looped into your design.

